



SAIRAJ 
Enclave

■ RESIDENTIAL
2 & 3 BHK FLATS

SITE ADDRESS:

CTS No 6082 RS 190/2A

Shivaji Colony,

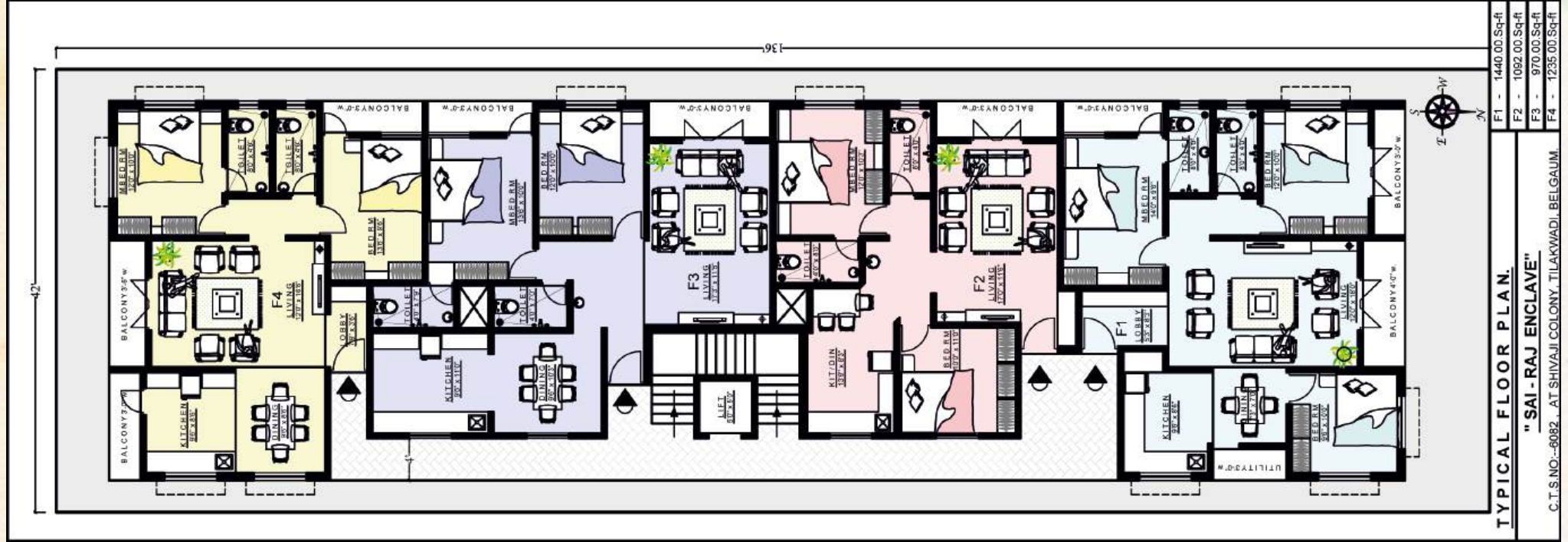
Tilakwadi belagavi

A PROJECT BY

 **sairaj**
BUILDERS

www.sairajbuilders.com

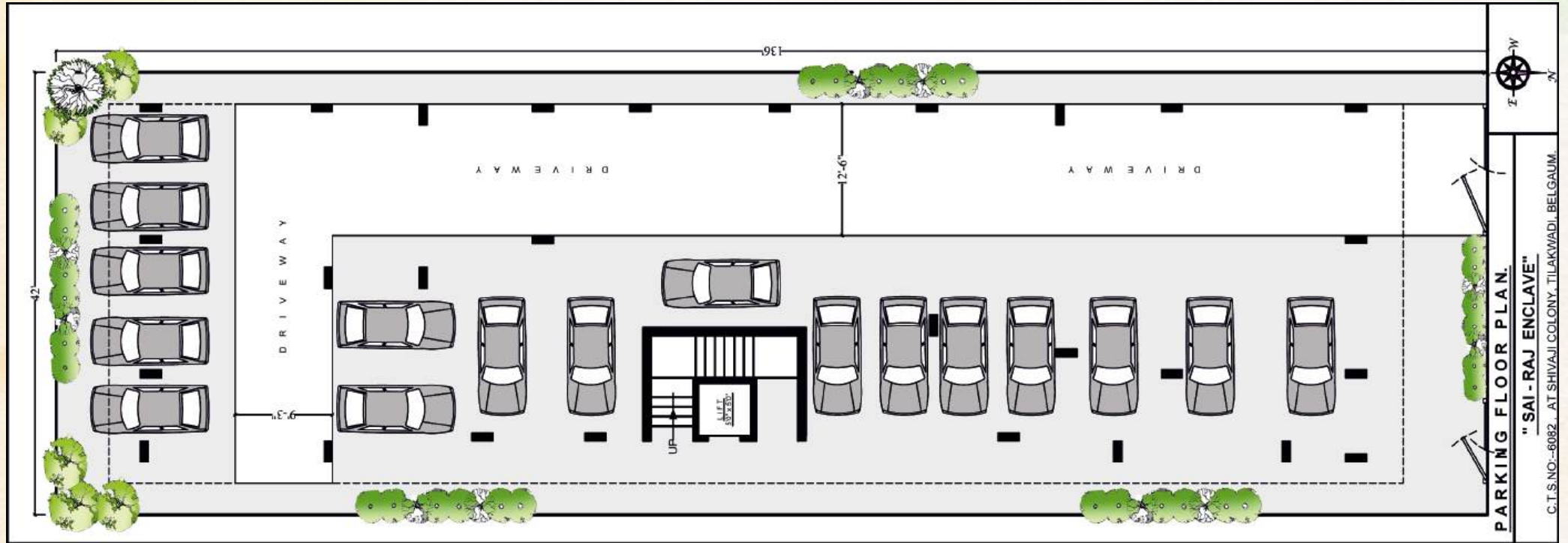
TYPICAL FLOOR PLAN



SAIRAJ
ENCLAVE

- RESIDENTIAL
2 & 3 BHK FLATS

PARKING FLOOR PLAN



SITE ADDRESS:

CTS No 6082 RS 190/2A

Shivaji Colony,

Tilakwadi belagavi

A PROJECT BY



SPECIFICATIONS

- ◆ 3BHK, 2BHK Residential Flats.
- ◆ R.C.C.Frame Structure
- ◆ 2' X 4' Vitrified Flooring for Living, Kitchen, Dinning & Bedrooms.
- ◆ Anti Skid Flooring in Bathroom & Balconies
- ◆ Powder Coated Aluminium Two Tracks Cladding Windows with M. S. Safety Grills.
- ◆ Granite Kitchen Platform with Stainless Steel Sink.
- ◆ Colour Glazed Dado Tiles above Kitchen Platform Up-to-Lintel Level.
- ◆ Decorative Main Door with Brass Fittings & All others are Flush Doors
- ◆ Electrical and Plumbing Provision For water Purifier.
- ◆ Premium Quality C.P. Plumbing Fixtures.
- ◆ Provision for water Heater and Exhaust fans in all Toilets.
- ◆ Single Lever Hot/Cold Mixer in Bathroom.
- ◆ Concealed wiring with standards Switches.
- ◆ T.V. and Telephone Points in Living.
- ◆ Painting(Internal-Oil-Bond Distemper, External-Weather Coat Paints)
- ◆ Paid Car Parking.



BOOKINGS NOW OPEN

Project By:
Mahesh Narayan Fagare
M: 9448140576

Rohit Mahesh Fagare
M: 8095496841

Structural:
Deelip L. Kulkarni
Belgaum

Architect:
Prabha D. Sawant.
Pune | M: 8105999446



SCAN QR CODE
FOR LOCATION

Office Address: CTS No. 356/1A, Opp. Union Bank, Tilakwadi, Belgaum
www.sairajbuilders.com | sairajbuilders33@gmail.com